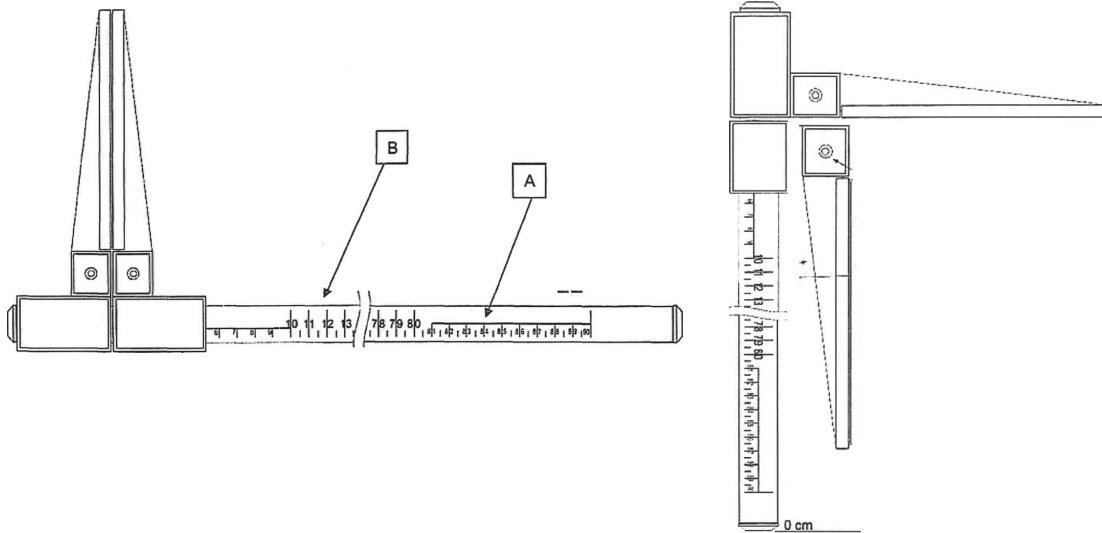




**GIMA**

PROFESSIONAL MEDICAL PRODUCTS

**CALIBRO PER NEONATI**  
**BABY MEASURING ROD WITH CALIPERS**  
**JAUGE POUR BÉBÉ**  
**CALIBRE PARA BEBÉS**  
**MEDIDOR PARA RECÉM-NASCIDOS**  
**MESSSCHIEBER FÜR NEUGEBORENE**  
**PEDIOMETRU TIP RIGLĂ PENTRU NOU-NĂSCUȚI**  
**KROPPSMÄTARE FÖR SPÄDBARN**



**FOREWORD**

The purpose of this manual is to provide the Customer with all possible information on the BABY MEASURING ROD WITH CALIPERS, as well as the use and maintenance instructions to help maintain the performance and efficiency of the BABY MEASURING ROD WITH CALIPERS over time.

The user manual must be kept in good condition and stored in a place where it is accessible for quick reference.

**INTENDED USE**

The BABY MEASURING ROD WITH CALIPERS is an instrument used to measure in cm, with an accuracy of  $\pm 1$  cm, the length of a baby's body, or parts of its body.

**INSTRUCTIONS FOR USE**

Bring the two jaws close to the part of the body to be measured and read the value indicated by the pointer on the graduated scale.

The device features a graduated rod with two types of scales for the measurement: in cm

- A) the smaller scale from 0-90 cm with a 0.5 cm increment – tolerance  $\pm 0.5$  cm
- B) the larger scale from 0-90 cm with a 0.5 cm increment – tolerance  $\pm 0.5$  cm

It can also be used vertically by turning the internal jaw 90° against the graduated rod.

**WARNINGS/MAINTENANCE**

The BABY MEASURING ROD WITH CALIPERS must be used by qualified personnel only.

Do not use the device if it is damaged. Do not repair it yourself; contact the manufacturer if necessary.

After opening the packaging, check all the parts and components of the product. Check that none are missing and that they are in perfect condition.

The BABY MEASURING ROD WITH CALIPERS must be cleaned using a cloth dampened with substances that do not damage aluminium, such as alcohol and/or glass cleaner.










The BABY MEASURING ROD WITH CALIPERS is designed to last: it is resistant to most chemicals, except for methyl ethyl ketones (M.E.K.), thinners and nail polish removers.

The BABY MEASURING ROD WITH CALIPERS must be stored in its box in a dry place.

**DESCRIPTION OF SPARE PARTS**

Part No.	Part description
1	Jaws
2	Mobile support
3	Fixed support
4	Graduated aluminium rod
5	Plastic cap

For the replacement of any components, the instrument must be sent to the manufacturer.

	Product code		Lot number
	Keep away from sunlight		Keep in a cool, dry place
	Medical Device complies with Directive 93/42/EEC		Manufacturer
	Caution: read instructions (warnings) carefully		Consult instructions for use
	Serial number		

**GIMA WARRANTY TERMS**

The Gima 12-month standard B2B warranty applies.

**REF** 10455 (GIMA 27326)



METRICA S.p.A.  
Via Grandi, 18  
20097 San Donato Milanese (MI) - Italia  
Made in Italy

Distribuito da / Distributed by / Distribué par / Distribuido por /  
Distribuído por / Vertrieben von / Distribuit de / Distribuerat av:  
**Gima S.p.A.**

Via Marconi, 1 - 20060 Gessate (MI) - Italy  
gima@gimaitaly.com - export@gimaitaly.com  
[www.gimaitaly.com](http://www.gimaitaly.com)

