



# GIMA

PROFESSIONAL MEDICAL PRODUCTS

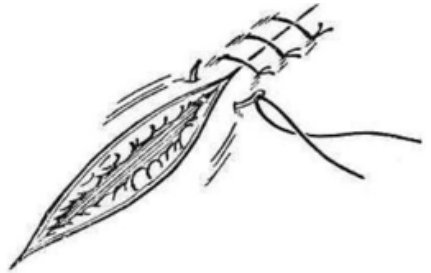
## **PAD ESERCITAZIONE SUTURA - SUTURE TRAINING PAD COUSSIN D'ENTRAÎNEMENT AUX SUTURES ALMOHADILLA DE ENTRENAMIENTO DE SUTURA ALMOFADA PARA TREINO DE SUTURA**

<b>Material:</b> Silicone	<b>Size:</b> 17.2x12x1.2cm	<b>Weight:</b> 240g
<b>Materiale:</b> Silicone	<b>Dimensioni:</b> 17,2x12x1,2 cm	<b>Peso:</b> 240 g
<b>Matériau:</b> Silicone	<b>Dimensions:</b> 17,2x12x1,2 cm	<b>Poids:</b> 240 g
<b>Material:</b> Silicona	<b>Dimensiones:</b> 17,2x12x1,2 cm	<b>Peso:</b> 240 g
<b>Material:</b> Silicone	<b>Dimensões:</b> 17,2x12x1,2 cm	<b>Peso:</b> 240 g

### **Suturing techniques**

The suture pad provide several types of wounds. You can practice following skills:

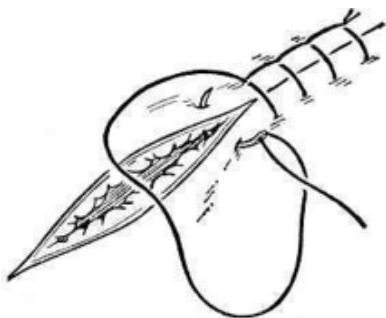
1. **Simple interrupted suture:** simple operation, the most application, each stitch a single knot, used in the skin, subcutaneous tissue, muscle, aponeurosis suture, especially for wounds with infection.



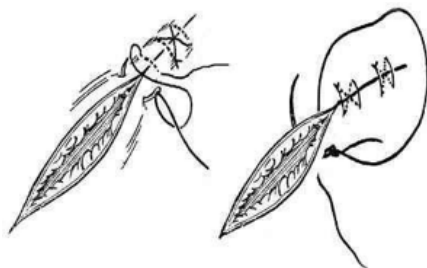
2. **Continuous suture method:** after the first needle is sutured, the entire wound is sutured with the suture, and a needle before the end is left, and the weight tail is pulled out to remain on the opposite side to form a double line and a heavy line tail knot.



3. **Continuous seam stitching method:** the operation saves time, the haemostatic effect is good, the thread is interlaced every time during the suture process, and is mostly used for closing the gastrointestinal end and suturing during skin transplantation.



4. **8 - word suture:** consists of two intermittent sutures, which are firm and time-saving, such as sutures of the fascia.



5. **Subcuticular suture:** the needle is inserted from one end of the incision, and then alternately passes through the inner edge of the incision edge of both sides, and is sewn to the other end of the incision to be pierced, and finally tightened. Commonly used for suturing of exposed skin incisions, such as cervical thyroidectomy.

